

Replogle Barograph

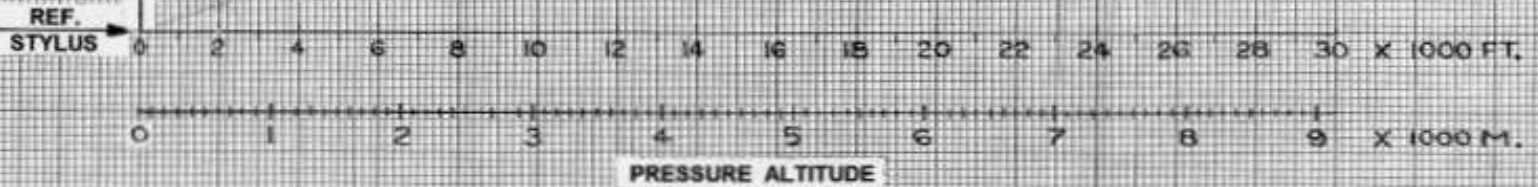


BAROGRAPH CALIBRATION

BAROGRAPH MAKE REPLOGLE S/N 313
CALIBRATED BY JOE TRINKWALDER DATE 12/11/09

J. C. TRINKWALDER PRODUCT DESIGN
7658 ARNOLD DRIVE • N. TONAWANDA, NY 14120

VERTICAL HEIGHT OF TRACE



1 FT. = .304801 M.
1 M. = 3.280833 FT.

E. H. REPLOGLE

ALTIMETRES SHOWN FOR APPROXIMATION ONLY

E. H. REPLOGLE

USE CALIBRATION CHART

REPLOGLE S No 313

CAL BY JOE TRINKWALDER

DEC. 11, 2009

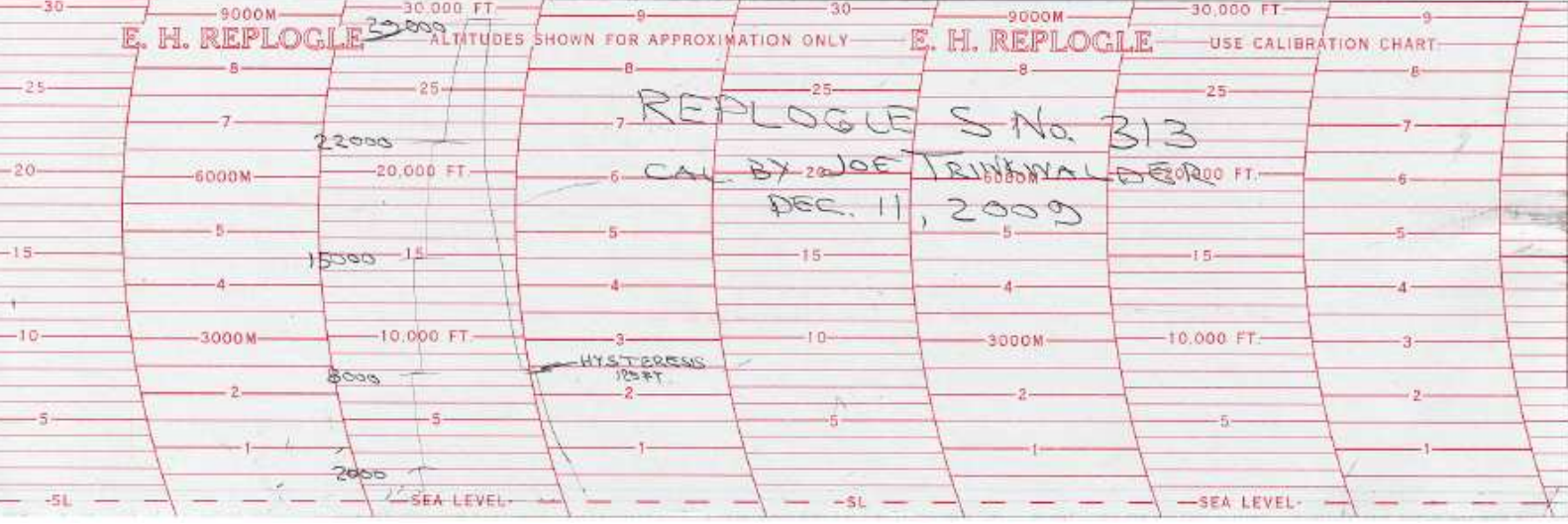
22000

15300

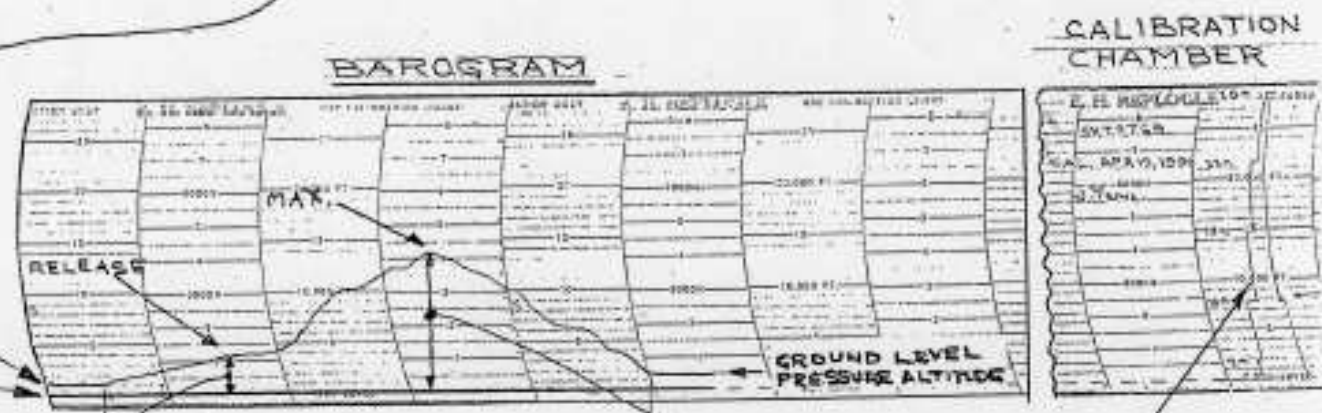
8000

2000

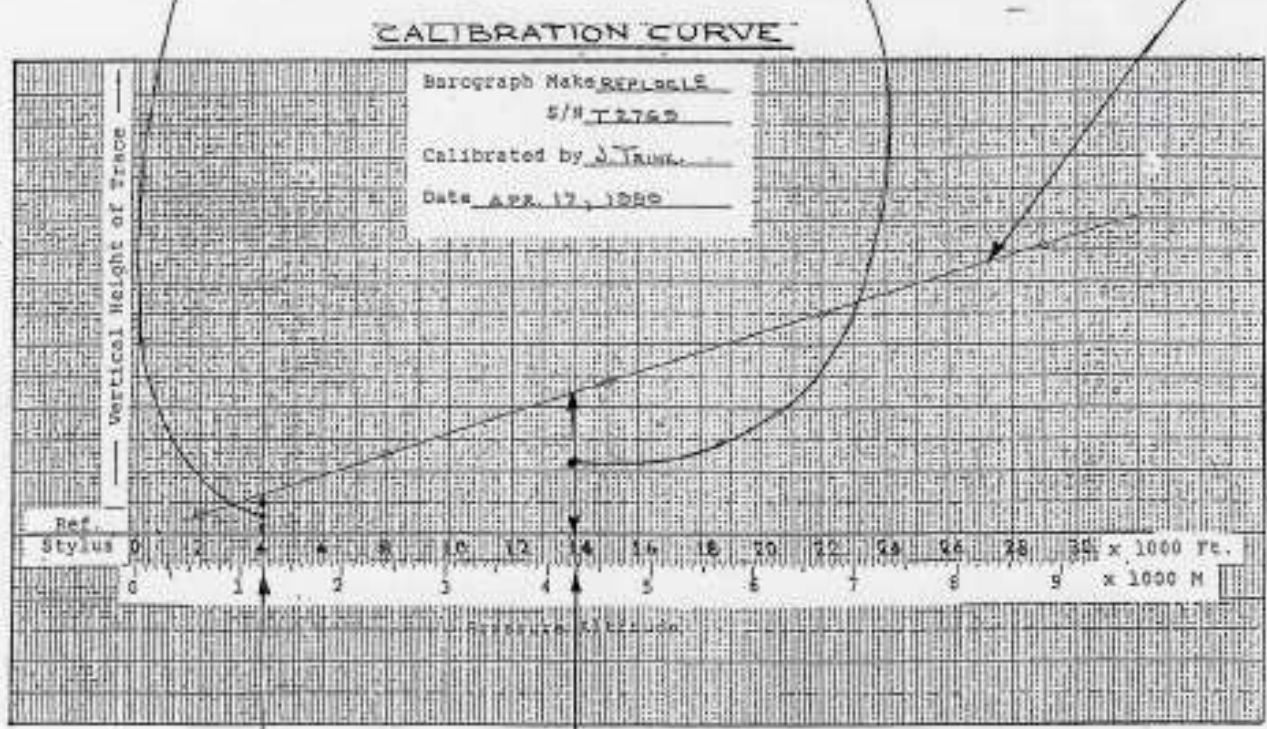
HYSTERESIS
125 FT



CALIBRATION CHART The printed scale on the Pressure Sensitive charts are for reference use only. The furnished calibration is a plot of the distance of the altitude scriber above the reference scriber at any given pressure altitude and is plotted in a climb. To determine the calibrated altitude of any point on the barogram, take a measurement of or set dividers to the vertical distance of this point above the reference. This distance, disposed vertically, is then slide along until it matches the height of the calibration curve at which point the altitude is read off the horizontal scale. This must be done at two points in order to establish an altitude gained.



CALIBRATION DATA USED TO GENERATE CALIBRATION CURVE.



$$\begin{array}{r}
 \text{ALTITUDE GAINED} = 4290 \\
 - 1230 \\
 \hline
 3060 \text{ M}
 \end{array}$$